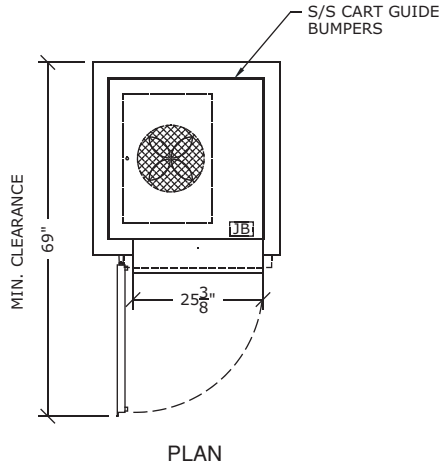


# RIFS-1-TMWW

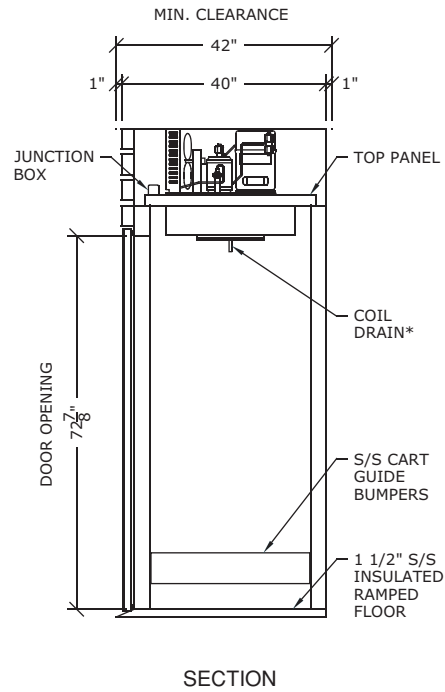
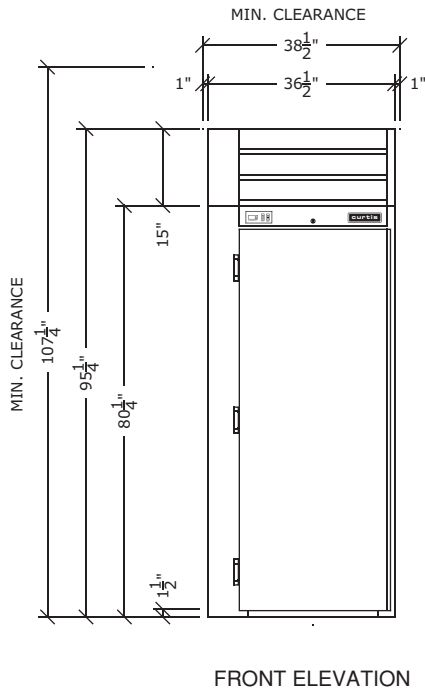
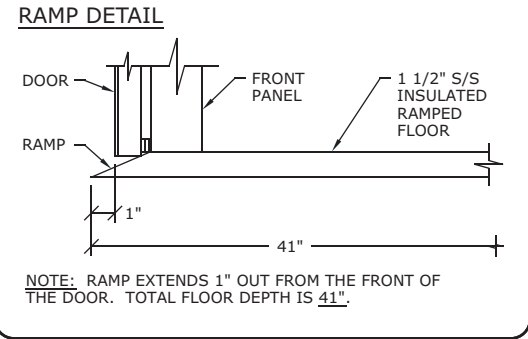
# curtis

## CORIENTE V2

- FINISHED IN WHITE BAKED ENAMEL INTERIOR & EXTERIOR.
- 1 1/2" STAINLESS STEEL RAMPED FLOOR.
- 1 FULL LENGTH, SOLID HINGED DOOR.
- STAINLESS STEEL CART GUIDE BUMPERS.
- DIGITAL THERMOMETER.
- TOP-MOUNTED, SELF-CONTAINED, 1/2 H.P., AIR-COOLED REFRIGERATION SYSTEM, R-404A, 115/1/60.



LEGEND	NOTES:
JB - JUNCTION BOX ON TOP OF REACH-IN	* DRAIN CONNECTION BY OTHERS



ROLL-IN FREEZER (-18°C/0°F)

PDS-RIFS-1-TM-10/06

CAPACITY		HEIGHT		WIDTH		DEPTH		DOORS		SHELVES	ELECTRICAL			WEIGHT		SHPG. VOL.
C.F.	LTR.	IN.	CM.	IN.	CM.	IN.	CM.	FULL STD.	HALF OPT.		H.P.	VOLT.	AMP.	LB.	KG.	C.F.
47	1333	95 1/4	242	36 1/2	93	40	102	1	N/A	N/A	1/2	115/1/60	12.0	500	600	80